

NMPP ENERGY

# WORKING TOGETHER WORKS



OUR PRODUCT IS ENERGY.  
OUR MISSION IS SERVICE.  
OUR POWER IS PEOPLE.



**NMPP**

**MERN**

**NPGA**

**RCE**



[WWW.NMPPENERGY.ORG](http://WWW.NMPPENERGY.ORG)



# WHO WE ARE

**NMPP Energy is a joint-action agency serving nearly 190 municipalities in the Midwest and Rocky Mountain regions through four organizations:**

**Nebraska Municipal Power Pool (NMPP)**

Utility-related services

**Municipal Energy Agency of Nebraska (MEAN)**

Wholesale electric supply

**National Public Gas Agency (NPGA)**

Wholesale natural gas supply

**Public Alliance for Community Energy (ACE)**

Retail natural gas supply

The four organizations that make up NMPP Energy coalition are owned by their members, allowing each member community the benefit of local control over rates and services.

NMPP Energy's true power lies in its people—members and staff—working together to provide cost-based services that add value and benefit member communities.

NMPP Energy's organizations have a diverse membership with communities in Colorado, Iowa, Kansas, Nebraska, North Dakota and Wyoming.



NMPP



## UTILITY RELATED SERVICES

The Nebraska Municipal Power Pool (NMPP) is the service organization of NMPP Energy. Working in partnership with the other entities of NMPP Energy, NMPP provides assistance to nearly 200 members in a variety of energy and management areas. NMPP was formed in 1975 by 19 communities working together to pool energy resources and achieve bargaining strength in the power industry.

In partnership with NMPP, members have carefully developed a line of cost-based products and services that help municipalities help themselves. The broad range of services includes municipal utility billing software, cost of service rate studies, electric distribution system planning and feasibility studies. Utilities use NMPP as a resource to strengthen their local advantage and add value to their community.



Visit [NMPPenergy.org/services](http://NMPPenergy.org/services) to see a list of cost-based services NMPP provides to its members.



NMPP MEAN NPCA ACE

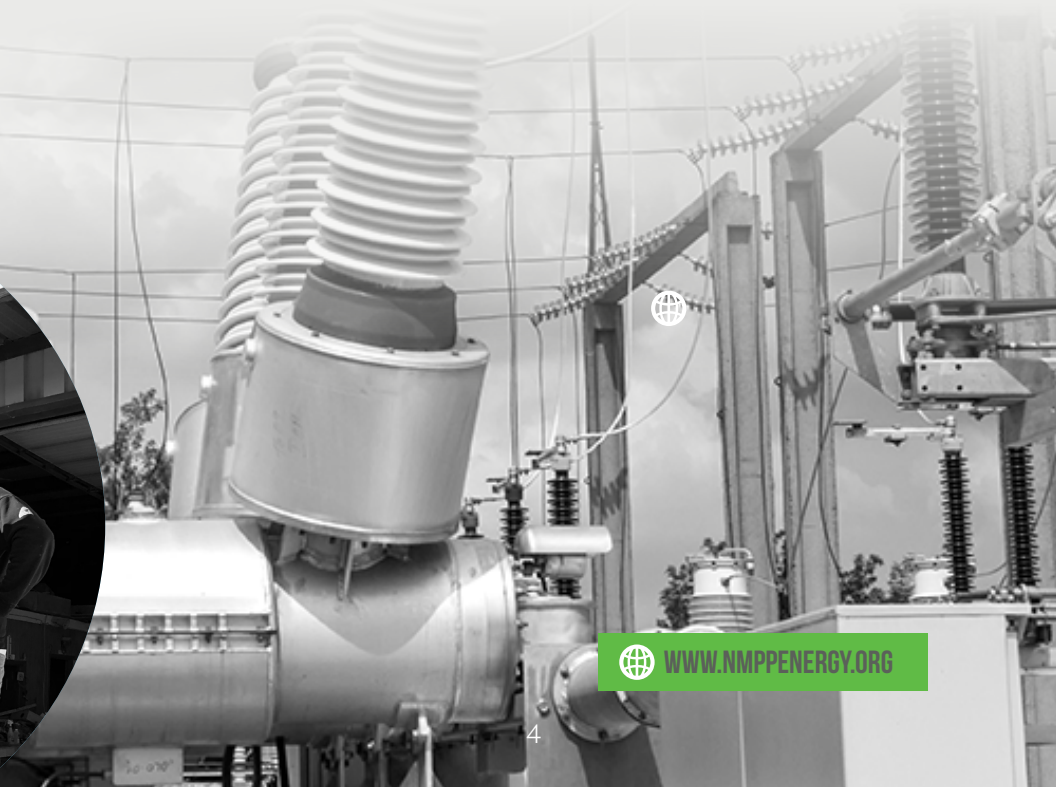


# **MEAN** *Municipal Energy Agency of Nebraska*

**WHOLESALE ELECTRIC SUPPLY**

Formed in 1981, MEAN provides cost-based wholesale power supply and transmission services to its member communities, which includes more than 60 municipalities in Colorado, Iowa, Nebraska and Wyoming.

MEAN utilizes a diverse power supply portfolio consisting of generation facility ownership and shared participation, member generation and purchased power. MEAN's power supply mix includes hydro, nuclear, natural gas, coal and renewable energy. MEAN, like all NMPP Energy organizations, is member-driven with each MEAN member community having a voting representative.



[WWW.NMPPENERGY.ORG](http://WWW.NMPPENERGY.ORG)

NPGA



## WHOLESALE NATURAL GAS

The National Public Gas Agency (NPGA) is the wholesale natural gas supplier of NMPP Energy. It formed in 1991 under the Nebraska Interlocal Cooperation Act.

NPGA supplies natural gas to nearly 20 communities, including 13 member communities. NPGA participants benefit by pooling natural gas purchases together to achieve economies of scale and increase operational efficiency by centralizing transportation management operations.

NPGA works with individual participants, small communities, members and other customer communities to develop a supply plan that fits the needs of each community. This includes identifying the types of pricing that work best with each community to achieve optimal results.



[WWW.NMPPENERGY.ORG](http://WWW.NMPPENERGY.ORG)



*Public Alliance for  
Community Energy*

## RETAIL NATURAL GAS

The Public Alliance for Community Energy (ACE) is the not-for-profit, retail natural gas supply organization of NMPP Energy. It formed in 1998 to compete in the Nebraska Choice Gas Program.

ACE consists of Nebraska communities that joined together to provide competitively priced natural gas and, at the same time, keep the revenues in the state to benefit ACE communities. ACE is owned and controlled by Nebraska communities. The ACE board of directors is made up of representatives of member communities who can establish rates and policies for ACE.

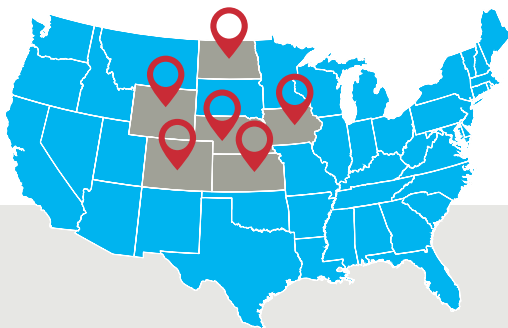


[WWW.ACEENERGY.ORG](http://WWW.ACEENERGY.ORG)

As a not-for-profit supplier, revenue earned above the cost of operation may be returned to ACE communities by the board of directors, offering a potential source of revenue to member communities. Since forming, ACE has provided more than \$3.1 million to its ACE member communities through its revenue return program.

Today, ACE serves more than 16,000 customers in Nebraska and has 75 member communities and one public power district.

# NMPP ENERGY MEMBERS



## Colorado

Arkansas River Power Authority\*, Aspen, Burlington, Center, Delta, Fleming, Fort Morgan, Fountain, Glenwood Springs, Gunnison, Haxtun, Holly, Holyoke, Julesburg, Lyons, Oak Creek, Wray, Yuma

*\*ARPA includes six municipal utilities*

## Iowa

Breda, Carlisle, Denver, Fonda, Indianola Municipal Utilities, Lake View, Rockford Light Plant, Sergeant Bluff, Wall Lake, Waverly Utilities

## Kansas

Auburn, Belleville, Beloit, Holyrood

## Nebraska

Ainsworth, Albion, Alliance, Alma, Ansley, Arapahoe, Arlington, Arnold, Atkinson, Auburn, Bartley, Bassett, Battle Creek, Bayard, Beatrice, Beaver City, Benedict, Benkelman, Bertrand, Big Springs, Bloomington, Blue Hill, Bradshaw, Brady, Bridgeport, Broken Bow, Burwell, Cairo, Callaway, Cambridge, Central City, Chadron, Chappell, Clay Center, Cozad, Creighton, Crete, Curtis, Dakota City, Dalton, David City, DeWitt, Eagle, Edgar, Edison, Emerson, Exeter, Fairbury, Fairmont, Falls City, Franklin, Friend, Genoa, Gering, Gibbon, Gordon, Gothenburg, Grand Island, Grant, Greenwood, Gresham, Gurley, Hartington, Hastings, Hemingford, Henderson, Hickman, Holbrook, Holdrege, Homer, Humphrey, Imperial Public Power District, Indianola, Kimball, Laurel, Lewellen, Lincoln Electric System, Long Pine, Loomis, Loup City, Lyman, Lyons, Madison, McCook, Minden, Mitchell, Morrill, Mullen, Murray, Nebraska City, Nebraska Public Power District, Neligh, Niobrara, Northeast Nebraska Public Power District, North Platte, Ogallala, Ord, Orleans, Osceola, Oshkosh, Osmond, Oxford, Palmer, Paxton, Pender, Peru, Pierce, Plainview, Polk, Potter, Ravenna, Red Cloud, Rushville, Sargent, Scottsbluff, Scribner, Seward, Shelton, Shickley, Shubert, Sidney, Snyder, South Sioux City, Spalding, Spencer, St. Paul, Stamford, Stromsburg, Stuart, Superior, Sutton, Syracuse, Tecumseh, Trenton, Utica, Wahoo, Wakefield, Walthill, Waterloo, Wauneta, Wausa, Wayne, West Point, Wilber, Winnebago, Wisner, Wood River

## North Dakota

Lakota

## Wyoming

Basin, Gillette, Torrington



NMPP MEAN NPGA ACE

8377 Glynoaks Drive - Lincoln, Neb. 68516

Phone: (800) 234-2595

E-mail: [info@NMPPenergy.org](mailto:info@NMPPenergy.org)

[www.NMPPenergy.org](http://www.NMPPenergy.org)